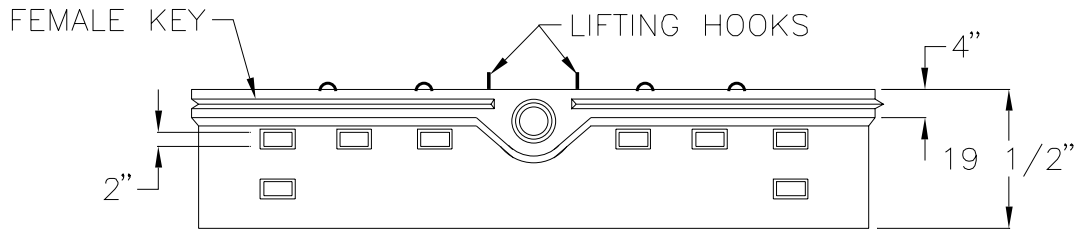
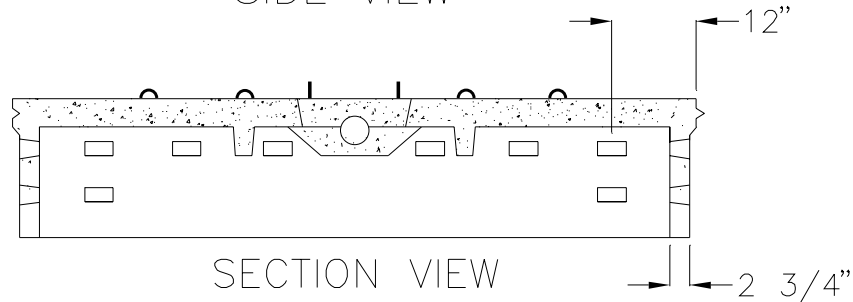


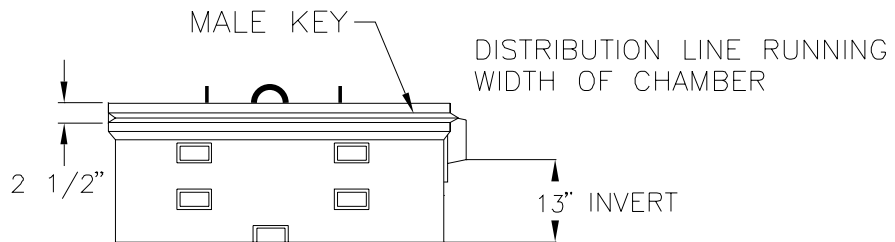
PLAN VIEW



SIDE VIEW



SECTION VIEW



RIGHT END VIEW

NOTES:

1. CONCRETE: 4000 PSI AFTER 28 DAYS
2. WEIGHT PER UNIT = 2495 LBS.
3. DESIGN LOAD 600 PSF
H-20 WHEEL LOADING AVAILABLE

RICHARD GENEST, INC.

**4X8 SIDE MOUNT
HIGH LEACHING CHAMBER**