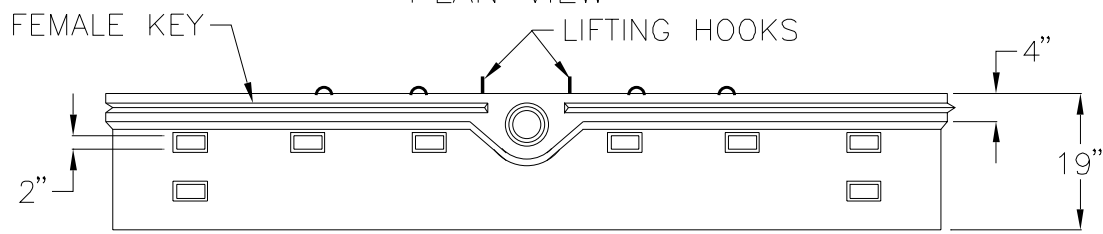
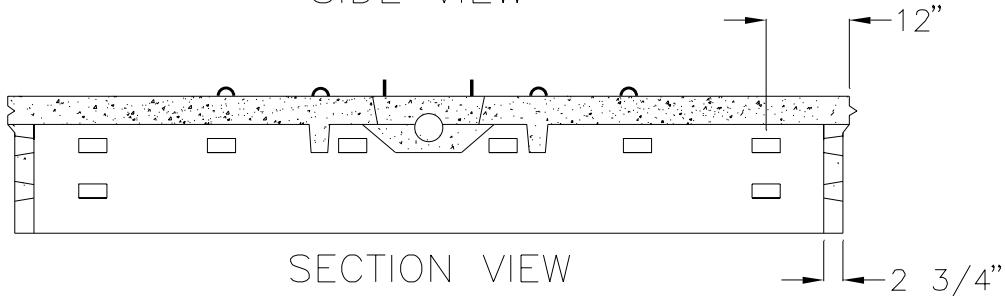


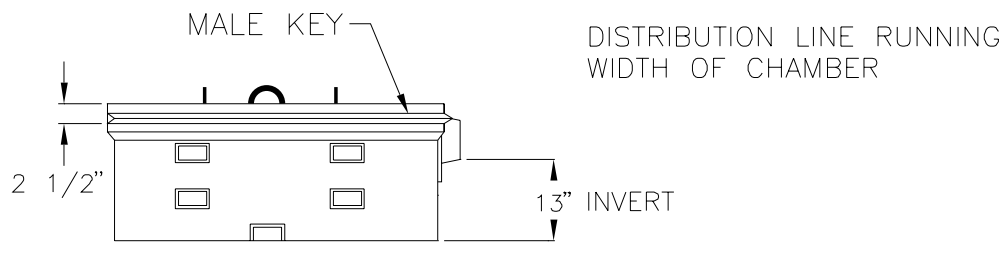
PLAN VIEW



SIDE VIEW



SECTION VIEW



RIGHT END VIEW

- NOTES:
1. CONCRETE: 4000 PSI AFTER 28 DAYS
 2. WEIGHT PER UNIT 3960 LBS.
 3. DESIGN LOAD 600 PSF
H-20 WHEEL LOADING AVAILABLE

RICHARD GENEST, INC.

**4X10 SIDE MOUNT
HIGH LEACHING CHAMBER**