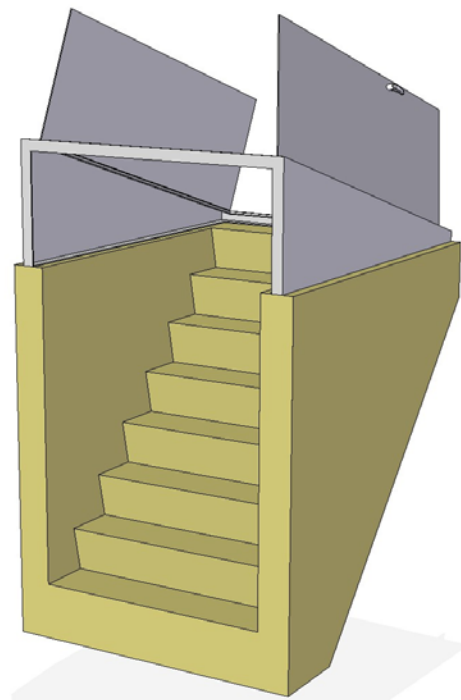


TYPE	W (WIDTH)	L (LENGTH)	HA (TOTAL)	HB (PRECAST)	HC (DOOR)	WEIGHT (LBS)
S	51-1/2"	45"	95"	43"	52"	2,400
A	51-1/2"	60"	90"	60"	30"	3,600
B	55-1/2"	66"	90"	68"	22"	4,800
C	55-1/2"	74"	95-1/2"	76"	19-1/2"	5,500



NOTES:
I. CONCRETE: 5000 PSI AFTER 28 DAYS



BULKHEAD

Rev.	Date: 2/22/2016	(207) 324-7215
238 Country Club Road (RT. 4) Sanford, ME 04073		