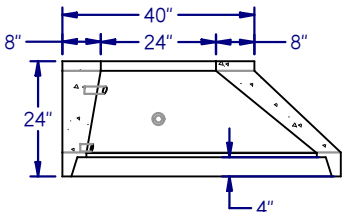
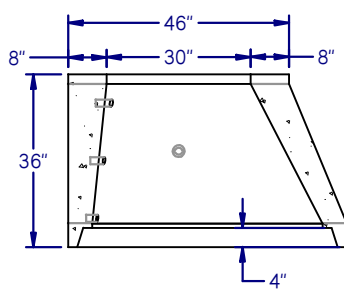


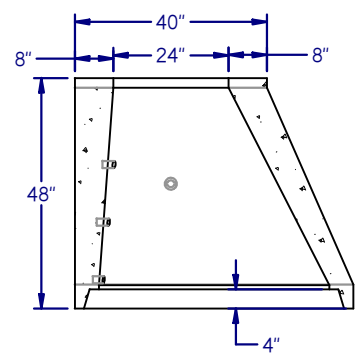
SECTION A-A



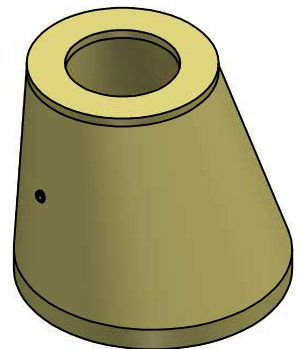
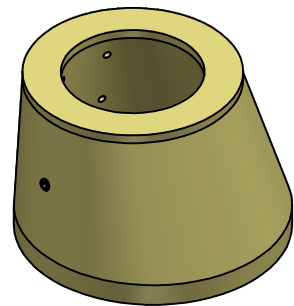
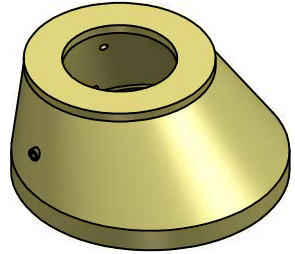
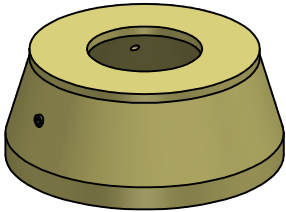
SECTION B-B



SECTION C-C



SECTION D-D



SIZE (HEIGHT)	WEIGHT (LBS.)
24" CONCENTRIC	1860
24" OFFSET	1860
36"	2665
48"	3900

NOTES:

1. CONCRETE: 5000 PSI AFTER 28 DAYS
2. CEMENT: TYPE III PER ASTM C150-81
3. REINFORCING: MEETS H-20 LOADING REQUIREMENTS
4. CONFORMS TO ASTM C-478 & MDOT SPECIFICATIONS
5. SHIPLAP JOINTS SEALED WITH BUTYL SEALANT



MANHOLE TOP CONES
238 Country Club Road (Route 4) Sanford, ME 04073
(207) 324-7215 (800) 477-8177
 Date: 8/31/2009