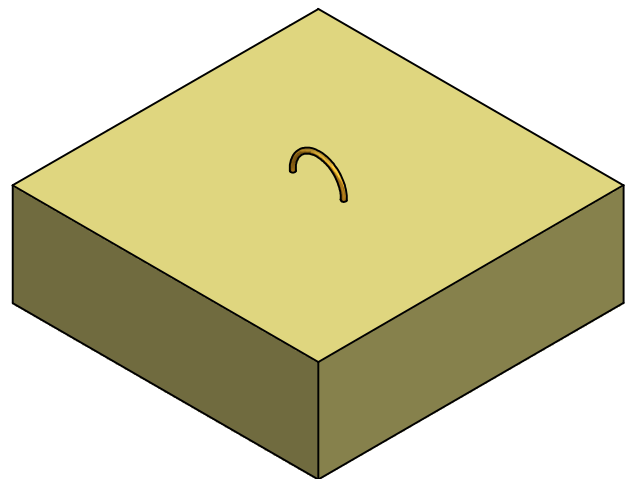


SECTION A-A



NOTES:

1. WEIGHT= 125 LBS.
2. CONCRETE: 5000 PSI AFTER 28 DAYS
3. REINFORCING: 6X6 10/10 W.W.M. & FIBERS



THRUST BLOCKS

238 Country Club Road (Route 4) Sanford, ME 04073

(207) 324-7215 (800) 477-8177

Date: 9/16/2009